
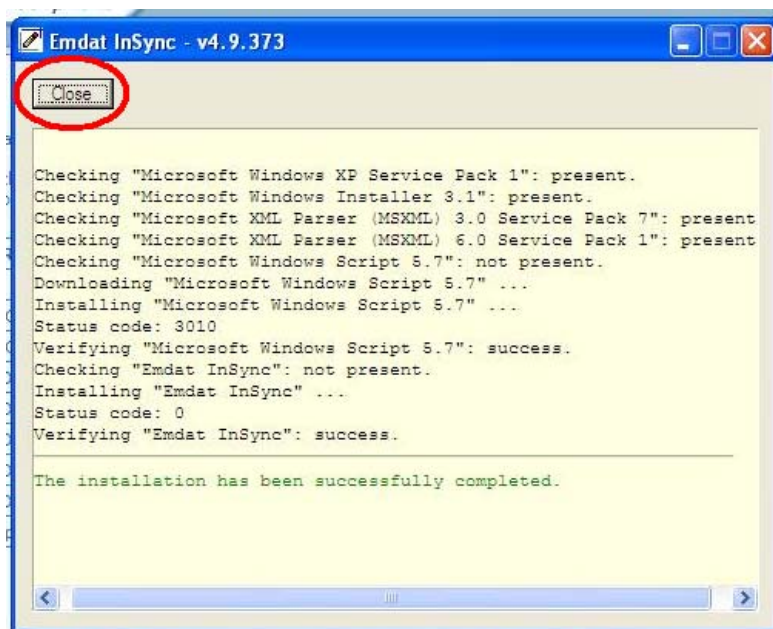


## Installing/Upgrading Insync

**Note:** If you already installed Insync onto your computer, the program might be running; therefore, you will need to exit the pre-existing Insync program to install the upgrade component. If you see the Insync  icon by the clock on the lower right of your screen, right click it and select "Exit".

1. On the home page ([www.rxtrans.com](http://www.rxtrans.com)), use the top menu and select software from the menu
2. Click on software on the left side of the **software page**
3. Click the **Get Insync** button
4. You will be prompted to install two files, select **run** and **next** when prompted
5. Insync will then run and install additional necessary files. When installation is complete, a message indicating a successful install will appear, at which time press the **close button**.



6. You should be prompted to restart the computer – select **yes** and you're done. If it doesn't ask to restart your computer, it is a good idea to do so at this time.